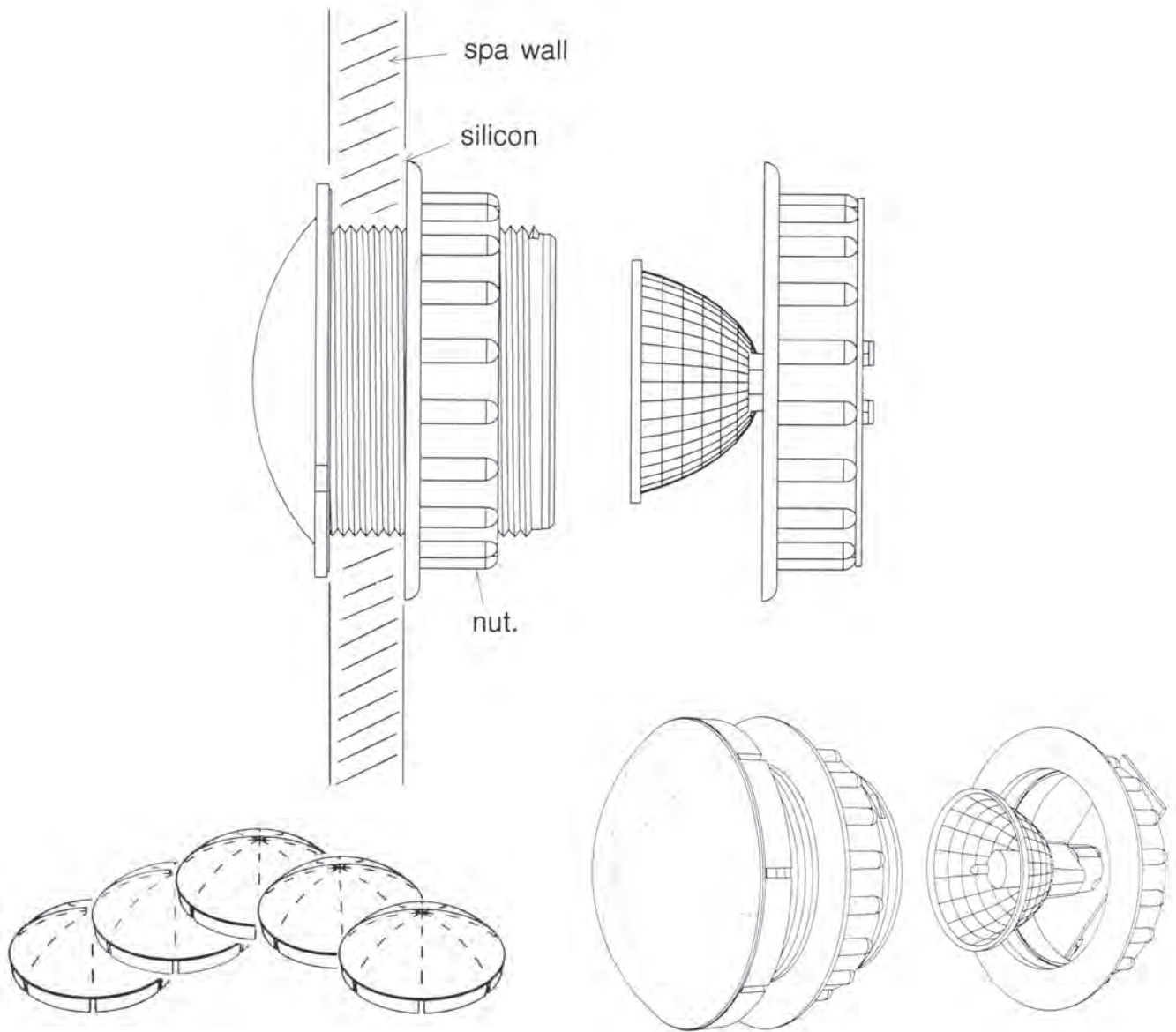


MODEL SE 4

INSTALLATION INSTRUCTIONS - DRY NICHE UNDERWATER SPA LIGHT.



Steps:

1. Using a holesaw, cut a 65mm hole in the fibreglass or acrylic wall of the spa.
2. Put light body through the hole, smear silicon sealant around body of light on outside wall.
3. Tighten the nut.
4. Attach globe and nut to body.

Notes:

1. Light should be installed so that easy access is gained from the back of the spa to replace globes.
2. For safe and proper installation, use only parts provided,
3. Transformer must be installed in an accessible position for servicing.

Warnings:

1. Ensure water is covering the light before turning it on.
2. Replace globe only with correct type - MR11 12 volt 35 watt.